

LDPCB

二位三通液控换向阀（常闭型）

说明 DESCRIPTION

A cartridge-style 2-way pilot-operated spool-type internal-vent directional valve

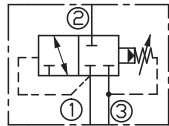
二位，三通，液控，内排，螺纹插装方向阀

工作 OPERATION

Pilot-operated, 2-way, directional cartridges valve, normally closed, the valve shifts when the pressure differential between port ① and port ③ exceeds the setting.

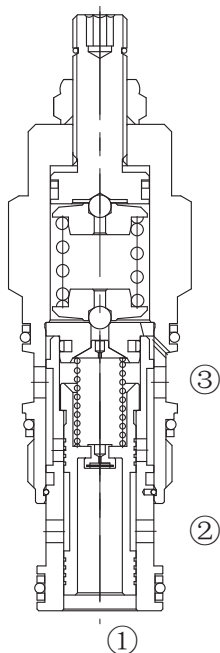
Pressure at port ③ is directly additive to the setting of the valve. Because of this, port ③ may not be useable as a work port in your circuit. Port ③ can be blocked to prevent the valve from shifting and Maximum pressure at port ③ should be limited to 3000 psi (210 bar).
 先导式三通换向阀，常闭；当①口和③口的压力差超过弹簧的设定时，②到③通，①口不通。③口压力直接叠加到阀的设定压力上，因此不能作为工作口。堵住③口能够阻止阀换向并且③口最大压力不得超过 210Bar。

SYMBOL

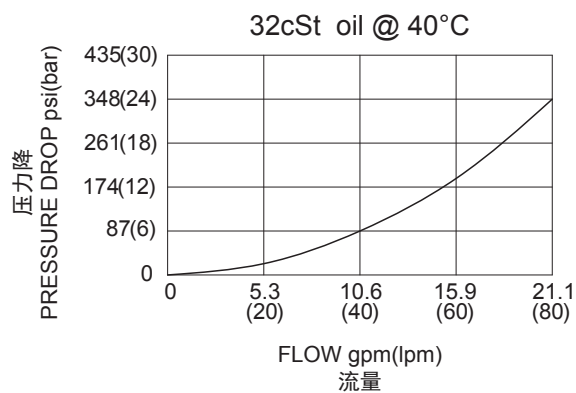


技术参数 SPECIFICATIONS

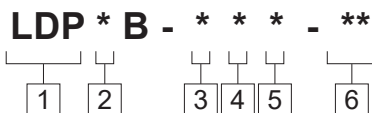
工作压力 (Operating Pressure):	350bar
流量 (Flow) :	See PRESSURE DROP VS.FLOW graph.
内泄漏 (Internal Leakage):	16 cc/min. max. at 70 bar
弹簧调压范围 (Spring Range):	
A: 100 - 3000 psi (7 - 210 bar), Preset预设: 1000 psi (70bar)	
B: 50 - 1500 psi (3.5 - 105 bar), Preset预设: 1000 psi (70bar)	
D: 25 - 800 psi (1.7 - 55 bar), Preset预设: 400 psi (28bar)	
E: 25 - 400 psi (1.7 - 28 bar), Preset预设: 200 psi (14bar)	
W: 150 - 4500 psi (10.5 - 315 bar), Preset预设: 1000 psi (70bar)	
温度 (Temperature):	-40°F to +250°F(-40°C to +120°C)
过滤 (Filtration):	See Page (参见) N-1
油液 (Fluids):	Mineral-based fluids with viscosities of 7.4 to 420 cSt. (矿物油粘度)
插孔 (Cavity):	SUN T-2A, See page M-6
阀块材料 (Body Material):	Steel & Ductile iron rated at 350Bar 钢和球铁允许使用最大压力350Bar



压力 - 流量曲线 PRESSURE DROP VS.FLOW



订货代号 TO ORDER



1 功能
LDP= 二位二通液控换向阀
Pilotd Two-way Spool Directional Valve

5 油封 Seal Kits
N= 丁晴橡胶 Buna N
V= 氟橡胶 Viton

6 阀块油口 Body Porting
空白 Blank= 不带阀块 None
8T=SAE8
10T=SAE10
3G=G 3/8
4G=G 1/2

2 流量 Flow
C=60L/min.

3 控制方式 Control
L= 标准螺钉调节
Standard Screw Adjustment

※ 阀块详见章节 K-23
其它螺纹油口也是可选择的
Other Porting is Available

4 弹簧调压范围 Spring Ranges
A =100-3000psi(7-210bar) Preset:1000psi(70bar)
B =50-1500psi(3.5-105bar) Preset:1000psi(70bar)
D =25-800psi(1.7-55bar) Preset:400psi(28bar)
E =25-400psi(1.7-28bar) Preset:200psi(14bar)
W =150-4500psi(10.5-315bar) Preset:1000psi(70bar)
Factory Pressure setting established at 15L/min;
工厂的设定是指换向阀开启 (流量为 15L/min)时的压力;

安装尺寸 INSTALLATION DIMENSIONS

Unit=Millimeters

