

LPS3-10

先导式顺序阀

说明 DESCRIPTION

A cartridge-style pilot-operated spool-type sequence valve with internal pilot and spring chamber drain

内控内排，滑阀型先导式顺序阀

工作 OPERATION

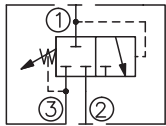
In its steady state, the valve blocks flow from ① to ②, with the spring chamber drained at ③. On attainment of a pre-determined pressure at ①, the cartridge shifts to open ① to ②.

Note that back-pressure on ③ adds to the spring setting value.

在稳定状态，①口与②口不通，③口与弹簧腔相通；在①口达到预设值时，①口到②口通。

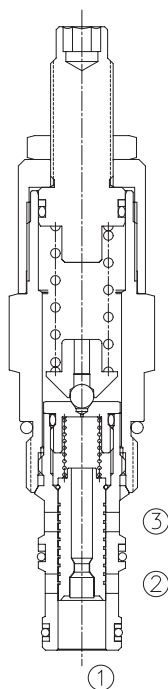
注：③口的背压按 1 : 1 地叠加到阀的设定上。

SYMBOL

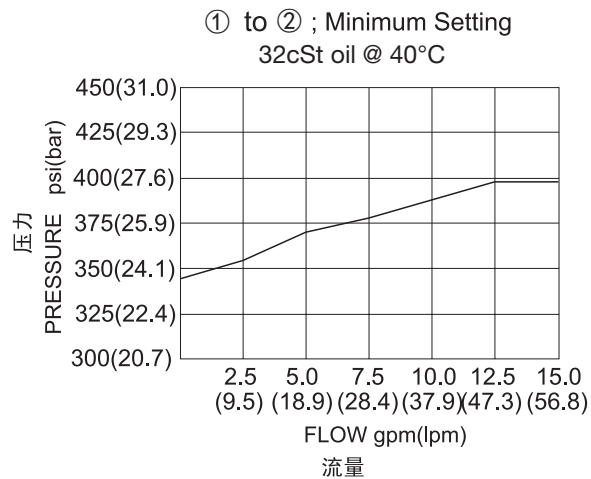


技术参数 SPECIFICATIONS

工作压力(Operating Pressure):	350 bar on port①and②; 240 bar on port③
流量(Flow):	See PRESSURE DROP VS. FLOW graph.
内泄漏(Internal Leakage):	82 cc/min. max. to 85% of nominal setting
弹簧调压范围(Standard Spring Ranges):	20 to 345 bar; preset预设定:172bar
温度(Temperature):	-40°F to +250°F(-40°C to +120°C)
过滤(Filtration):	See page (参见) N-1
油液(Fluids):	Mineral-based fluids with viscosities of 7.4 to 420 cSt.(矿物油粘度)
插孔(Cavity):	10-3, See page M-2
阀块材料(Body Material):	Steel & Ductile iron rated to 350bar 钢和球铁允许使用最大压力350bar



压力 - 流量曲线 PRESSURE DROP VS.FLOW



订货代号 TO ORDER

LPS3 - 10 - * * - */ ** - * ***

1
 2
 3
 4
 5
 6

- | | | |
|---|--|---|
| <p>1 功能
LPS3= 顺序阀
Spool-type Sequence Valve with
External Pilot and Internal Drain</p> | <p>3 弹簧调压范围 Spring Ranges
30=73-3000psi(5-210bar)
Preset:1520psi(105bar)
50=300-5000psi(20-345bar)
Preset:2500psi(172bar)</p> | <p>6 阀块油口 Body Porting
空白 Blank= 不带阀块 None
6T=SAE6
8T=SAE8
2G=G 1/4
3G=G 3/8</p> |
| <p>2 规格 Size
10=10 规格</p> | <p>4 调节 Adjustment
K= 调节手轮 1-1/2'Dia Knob
内六角调节杆 (Omit for 1/4' Hex Allen head)</p> | <p>※ 阀块详见章节 K-5
其它螺纹油口也是可选择的
Other Porting is Available</p> |
| | <p>5 设定压力 Setting In Bar
空白 Blank= 预设定 Preset
例 Example:0120=120bar</p> | |

安装尺寸 INSTALLATION DIMENSIONS

Unit=Millimeters

