

LSV-08-34-O

三位四通电磁阀 滑阀型

说明 DESCRIPTION

A solenoid operated, 4-way, 3-position, open center spool-type cartridge valve.

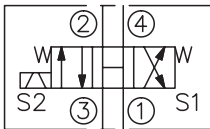
三位，四通，滑阀式电磁阀

工作 OPERATION

When de-energized, the valve allows flow at all ports. When the coil S1 is energized, the valve allows flow from ③ to ④ and from ② to ①; When the coil S2 is energized, the valve allows flow from ③ to ② and from ④ to ①.

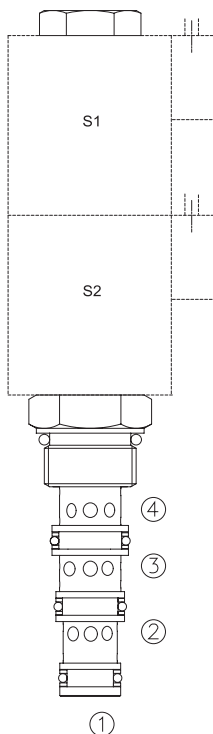
失电时，①，②，③和④均通；
线圈 S1 得电时，②和①通，③与④通；
线圈 S2 得电时，④和①通，③与②通。

SYMBOL

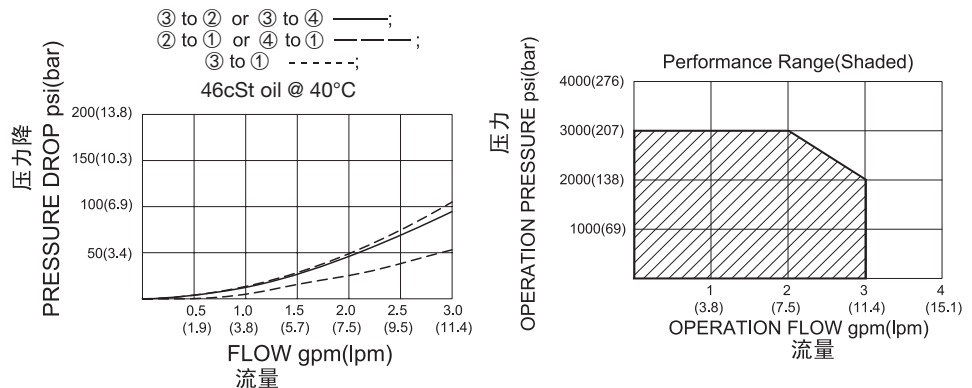


技术参数 SPECIFICATIONS

工作压力(Operating Pressure):	207bar
流量(Flow):	See PERFORMANCE CHARACTERISTIC graph.
内泄漏(Internal Leakage):	164cc/min.(毫升/分) max.
温度(Temperature):	-40°F to +212°F(-40°C to +100°C)
线圈额定负载(Coil Duty Rating):	Continuous from 85% to 115% of nominal voltage(连续工作电压)
过滤(Filtration):	See page (参见) N-1
油液(Fluids):	Mineral-based fluids with viscosities of 7.4 to 420 cSt.(矿物油粘度)
插孔(Cavity):	08-4, See page M-1
阀块材料(Body Material):	6061-T6 aluminum alloy rated to 207bar, Steel & Ductile iron rated to 350bar 6061-T6铝,允许使用最大压力207bar 钢和球铁允许使用最大压力350bar



压力 - 流量曲线 PRESSURE DROP VS.FLOW



LSV - 08 - 34 - O - * * - * *

┌───┐
┌───┐
┌───┐
┌───┐
┌───┐
┌───┐
┌───┐

1
2
3
4
5
6
7

- 1** 功能
LSV= 电磁阀 Solenoid Valve

- 2** 规格 Size
08=08 规格

- 3** 流道类型 Flow Path
34= 四通

- 4** 模式
O= 中位开通 Open Center

- 5** 电压 Voltage
1=12 VDC
2=24 VDC
3=110 VAC
4=220 VAC
5=10 VDC
7=48 VDC
8=24 VAC

- 6** 线圈连接 Coil Connection
D= Double Lead 双线
S= Single Lead 单线
H= Hirschmann 三插
ER= Deutsch Connector(Water-proof Coil)
德意志插座(防水线圈)
E= Single Stud 单接线柱
B= Double Spade 双插

- 7** 阀块油口 Body Porting
空白 Blank= 不带阀块 None
4T=SAE 4
6T=SAE 6
2G=G 1/4
3G=G 3/8

- ※ 阀块详见章节 K-3
其它螺纹油口也是可选择的
Other Porting Is Available

安装尺寸 INSTALLATION DIMENSIONS

Coil Must Be Installed With Letter Up
安装线圈时，字母必须朝上。

Unit=Millimeters

