

# LCBSN-20-S3-10

## 平衡阀

### 说明 DESCRIPTION

A cartridge-style standard capacity counterbalance valve  
平衡阀

### 工作 OPERATION

Counterbalance valves with pilot assist are meant for control on overrunning load. The check valve allows free flow from port ② to port ① while a direct-acting, pilot-assisted relief valve controls flow from port ① to port ② . Pilot assist at port ③ lowers the effective setting of the relief valve at a rate determined by the pilot ratio.

带先导开启平衡阀用于控制超越负载工况。油液从②口到①口单向自由流动；油液经直动，先导辅助从①口溢流到②口，③口是溢流辅助控制口，按控制比降低溢流功能的有效设定值。

### 特性 FEATURES

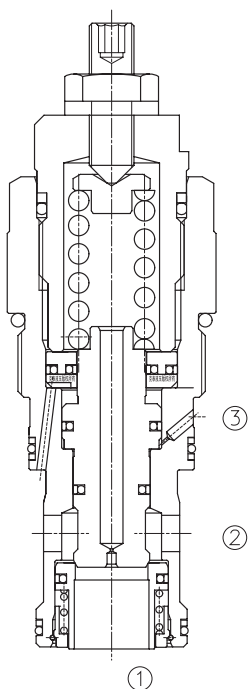
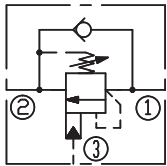
- Counterbalance valves should be set at least 1.3 times the maximum load induced pressure.

最大设定压力至少为最大负载压力的 1.3 倍。

- Factory pressure setting established at 5l/min.

工厂的设定是指当溢流阀开启（流量为 5l/min）时的压力。

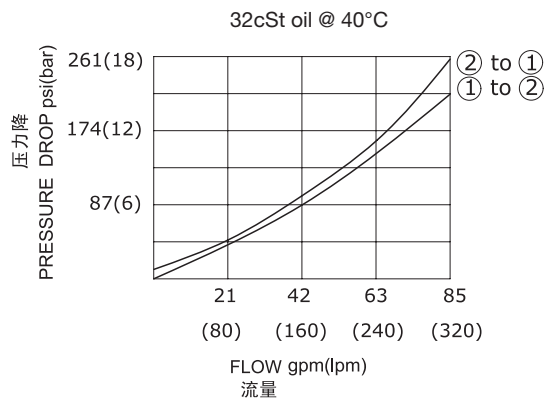
### SYMBOL



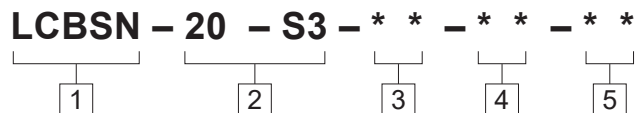
### 技术参数 SPECIFICATIONS

|   |  |
|---|--|
| 最大设定值(Max. Setting):                                  | 350 bar  |
| 最大负载(Max. Recommended Load Pressure at Max. Setting): | 270 bar  |
| 负载保持压力(Load Holding Pressure):                        | 350 bar  |
| 单向阀开启压力(Crack Pressure):                              | 0.8 bar  |
| 流量(Flow):   | See PRESSURE DROP VS.FLOW graph.                                     |
| 内泄漏(Internal Leakage):                                | 5 -10 drops/min(滴/分). at 80% of pressure setting(max. 40 drops/min.) |
| 控制比(Pilot Ratio):                                     | 10=8:1; 03=4:1   |
| 温度(Temperature):                                      | -40°F to +250°F(-40°C to +120°C)                                     |
| 过滤(Filtration):                                       | See page (参见) N-1  |
| 油液(Fluids):   | Mineral-based fluids with viscosities of 7.4 to 420 cSt.(矿物油粘度)      |
| 插孔(Cavity):   | 20-S3, See page M-10   |
| 阀块材料(Body Material):                                  | Steel & Ductile iron rated to 350bar 钢和球铁允许使用最大压力350Bar              |

### 压力 - 流量曲线 PRESSURE DROP VS.FLOW



订货代号 TO ORDER



|  |  |  |
|--|--|--|
| <p><b>1 功能</b><br/>LCBSN= 平衡阀<br/>Counterbalance Cartridge Valve</p> | <p><b>4 弹簧调压范围 Spring Ranges</b><br/>LJN:40=2000-6000psi(140-420bar)<br/>Preset:5000psi(350bar)(135bar/turn)<br/>LKN:20=1000-3000psi(70-210bar)<br/>Preset:2900psi(200bar)(87bar/turn)<br/>单向阀开启压力 :0.8bar</p> | <p><b>5 阀块油口 Body Porting</b><br/>空白 Blank= 不带阀块 None<br/>20T=SAE20<br/><br/>其它螺纹油口也是可选择的<br/>Other Porting is Available</p> |
| <p><b>2 规格 Size</b><br/>20-S3=20-S3 规格</p>                           |  |  |
| <p><b>3 控制比 Pilot Ratio</b><br/>10=8:1<br/>03=4:1</p>                |  |  |



安装尺寸 INSTALLATION DIMENSIONS

Unit=Millimeters

