

# LLOHD-8DN

## 逻辑阀

### 说明 DESCRIPTION

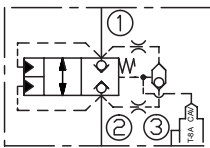
A cartridge-style vent-to-open, spring biased closed, unbalanced poppet logic element with pilot source from port ① or ② and integral T-8A control cavity  
 外接口开启，弹簧偏置关闭，非平衡锥阀逻辑单元带①口或②口导压和集成 T-8A 控制插孔

### 工作 OPERATION

This valve is an unbalanced, vent-to-open, 2-way logic switching element with an integral pilot control cavity. It is spring biased closed and uses port ① or ② as a pilot source. With a pilot 2-way valve in the closed position installed in the T-8A cavity, the logic element will remain in the closed position. With the pilot valve open, the logic element will open providing there is a sufficient combination of pressures to overcome the spring force. The force generated at port ③, plus the spring force, must be greater than the sum of the forces acting at port ① and port ② for the valve to remain closed.  
 NOTE: The pilot area (port ③) is 1.8 times the area at port ① and 2.25 times the area at port ②.

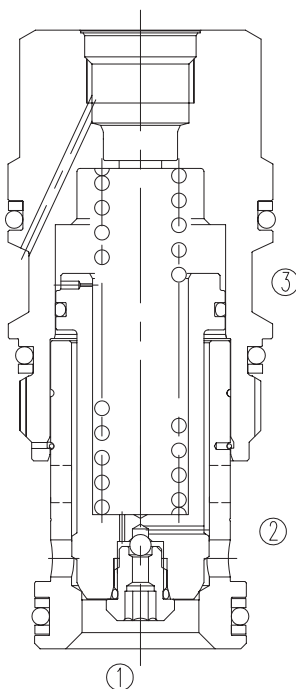
此阀为非平衡，外控开启，二通逻辑开关单元且带集成先导级控制插孔。此阀在弹簧偏置下处于关闭状态且用①口或②口作为先导源。当安装在 T-8A 插孔中的先导级二通阀处于关闭状态，逻辑单元会保持关闭状态。当先导级二通阀开启，只要有足够的组合压力（①口与②口）克服弹簧力，逻辑阀将开启。③口产生的作用力加上弹簧力必须比①口和②口产生的作用力之和要大，阀才能保持关闭状态。注意：先导面积（③口）是①口作用面积的 1.8 倍且为②口作用面积的 2.25 倍。

### SYMBOL

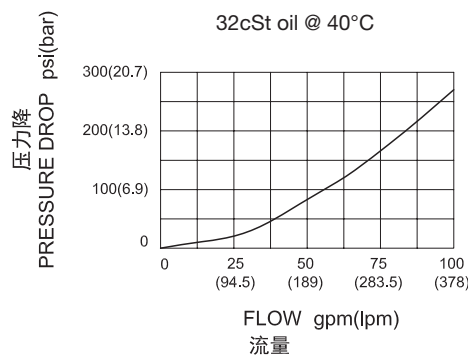


### 技术参数 SPECIFICATIONS

最大工作压力(Max.Operating Pressure):	350bar
流量(Capacity):	See PRESSURE DROP VS.FLOW graph.
温度(Temperature):	-40°F to +250°F(-40°C to +120°C)
过滤(Filtration):	See page (参见) N-1
油液(Fluids):	Mineral-based fluids with viscosities of 7.4 to 420 cSt.(矿物油粘度)
插孔(Cavity):	SUN T-17A, See page M-7
阀块材料(Body Material):	Steel & Ductile iron rated to 350bar 钢和球铁允许使用最大压力350Bar



### 压力 - 流量曲线 PRESSURE DROP VS.FLOW



## 订货代号 TO ORDER

**L L O H D - 8 \* \* - \* \***  










1
2
3
4
5
6
7

**1 功能**  
 LLO= 非平衡锥阀逻辑单元  
 Unbalanced Poppet Logic Element

**2 流量 Capacity**  
 H=380L/min

**3 导压口**  
 D= ①口或②口导压源

**4 控制方式 Control**  
 8= 集成 T-8A 控制插孔  
 Integral T-8A Control Cavity

**5 开启压力 Cracking Pressure**  
 D=50psi(3.5bar)

**6 油封 Seal**  
 N= 丁晴橡胶 Buna N  
 V= 氟橡胶 Viton

**7 阀块油口 Body Porting**  
 空白 Blank= 不带阀块 None  
 12T=SAE 12  
 16T=SAE 16  
 6G=G 3/4  
 8G=G 1

※ 阀块详见章节 K-25—K-26  
 其它螺纹油口也是可选择的  
 Other Porting is Available

## 安装尺寸 INSTALLATION DIMENSIONS

Unit=Millimeters

H

