

# LHS5-10-43

## 低压侧（热油）梭阀

### 说明 DESCRIPTION

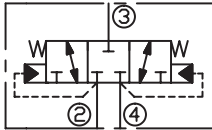
A cartridge-style, spring centered spool, closed center, 3-position, 3-way hot oil shuttle valve  
三位，三通，弹簧中位闭合，螺纹插装式热油梭阀

### 工作 OPERATION

Low-side (hot oil) shuttle cartridges allow hot oil to be diverted from the low pressure side of a closed loop system. When both work ports (ports ② and ④) are at equal pressures the valve is spring-centered to an all-ports-blocked position. When one of the work ports(port ② or ④) sees a higher pressure the opposite work port is connected to the common port(port ③).

低压侧（热油）梭阀允许来自封闭式系统的低压侧热油回油箱：当两工作腔（②口和④口）的压力相等时，弹簧对中阀处于中位，所有油口关闭；当两工作腔压力不等，低压腔的油液与③口接通。

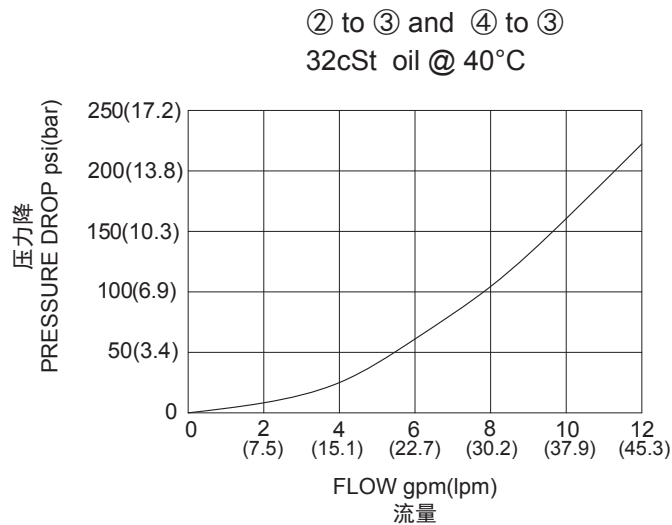
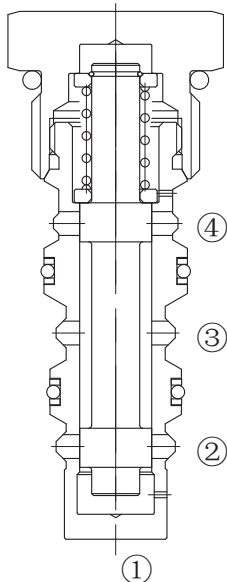
### SYMBOL



### 技术参数 SPECIFICATIONS

最大工作压力 (Max. Operating Pressure):	350bar
流量 (Flow) :	See PRESSURE DROP VS.FLOW graph.
温度 (Temperature):	-40°F to +250°F(-40°C to +120°C)
过滤 (Filtration):	See Page (参见) N-1
油液 (Fluids):	Mineral-based fluids with viscosities of 7.4 to 420 cSt. (矿物油粘度)
插孔 (Cavity):	10-4, See page M-2
阀块材料 (Body Material):	6061-T6 aluminum alloy rated to 207bar, Steel & Ductile iron rated to 350bar 6061-T6铝，允许使用最大压力207bar 钢和球铁允许使用最大压力350bar

### 压力 – 流量曲线 PRESSURE DROP VS.FLOW



订货代号 TO ORDER

**LHS5 - 10 - 43 - \* \* - \* \***

1
2
3
4

**1** 功能

LHS5= 热油梭阀  
Hot Oil Shuttle Valve

**2** 规格 Size

10=10 规格

**3** 换向压力 Compensator Spring

60=60psi(4.1bar)

**4** 阀块油口 Body Porting

空白 Blank= 不带阀块 None

6T=SAE6

8T=SAE8

2G=G 1/4

3G=G 3/8

※ 阀块详见章节 K-7

其它螺纹油口也是可选择的

Other Porting is Available

D

安装尺寸 INSTALLATION DIMENSIONS

Unit=Millimeters

