

LFC-12

单向节流阀

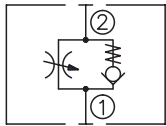
说明 DESCRIPTION

A cartridge-style adjustable flow control valve with reverse flow check
单向节流阀

工作 OPERATION

The valve varies flow restriction by adjusting needle in or out. Flow is metered from ② to ①. Free reverse flow is from ① to ②.
节流阀流量大小可通过调节螺杆来实现。②到①节流，①到②开启

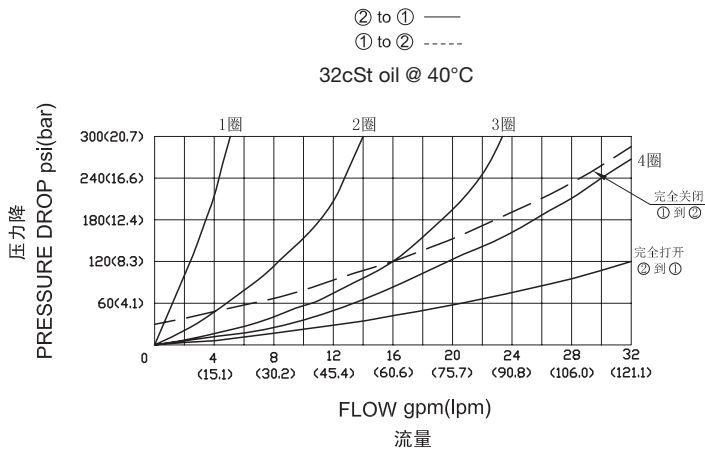
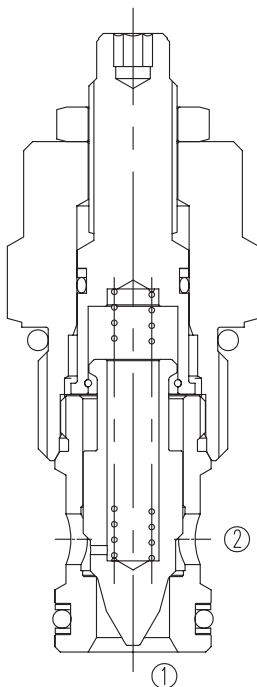
SYMBOL



技术参数 SPECIFICATIONS

工作压力(Operating Pressure):	240bar
流量(Flow):	See PRESSURE DROP VS.FLOW graph.
内泄漏(Internal Leakage):	3 drops/min(滴/分) Max at 240bar.
温度(Temperature):	-40°F to +250°F(-40°C to +120°C)
过滤(Filtration):	See page (参见) N-1
油液(Fluids):	Mineral-based fluids with viscosities of 7.4 to 420 cSt.(矿物油粘度)
插孔(Cavity):	12-2, See page M-3
阀块材料(Body Material):	6061-T6 aluminum alloy rated to 207bar, Steel & Ductile iron rated to 350bar 6061-T6铝,允许使用最大压力207bar 钢和球铁允许使用最大压力350bar

压力 – 流量曲线 PRESSURE DROP VS.FLOW



订货代号 TO ORDER

LFC - 12 - * - * *

- | | | |
|---|---|--|
| <p>1 功能
LFC= 单向节流阀
Adjustable Cartridge Flow Control Valve</p> | <p>2 规格 Size
12=12 规格</p> <p>3 调节 Adjustment
空白 Blank= 内六角调节杆
(Omit for 3/16" Hex Allen head)</p> | <p>4 阀块油口 Body Porting
空白 Blank= 不带阀块 None
10T=SAE10
12T=SAE12
6G=G 3/4
8G=G 1</p> |
|---|---|--|

※ 阀块详见章节 K-8
其它螺纹油口也是可选择的
Other Porting is Available

F

安装尺寸 **INSTALLATION DIMENSIONS**

Unit=Millimeters

