

LEPS2-20-P-F

外控逻辑阀

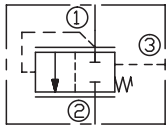
说明 DESCRIPTION

A cartridge-style, non-adjustable logic element with external pilot
外控逻辑阀

工作 OPERATION

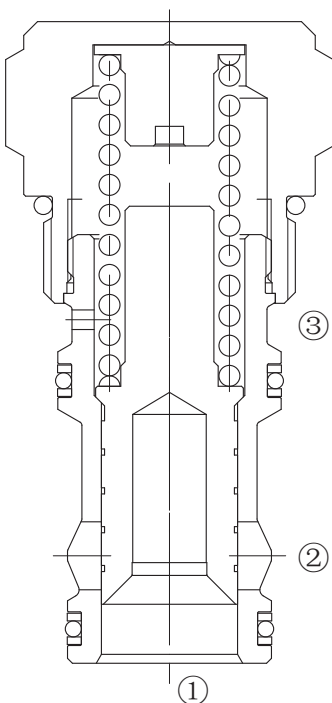
When pressure at ① rises above the selected spring bias pressure against the spool, the valve shifts to allow flow from ① to ② . Pilot pressure at ③ is additive to the spring bias pressure. The valve may be used in switching or compensation type applications.
当①口的油压克服弹簧设定压力时，油液从①口到②口流动。③口压力叠加到弹簧设定值上。应用在开关或者补偿场合。

SYMBOL

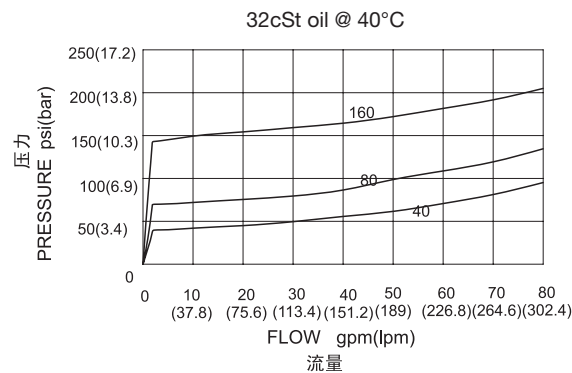


技术参数 SPECIFICATIONS

最大工作压力 (Max. Operating Pressure):	290bar
流量 (Flow) :	See PRESSURE DROP VS.FLOW graph.
内泄漏 (Internal Leakage):	82 ml/min. max. at 290 bar
温度 (Temperature):	-40°F to +250°F(-40°C to +120°C)
过滤 (Filtration):	See Page (参见) N-1
油液 (Fluids):	Mineral-based fluids with viscosities of 7.4 to 420 cSt. (矿物油粘度)
插孔 (Cavity):	20-S3, See page M-10
阀块材料 (Body Material):	Steel & Ductile iron rated to 350bar 钢和球铁允许使用最大压力350bar



压力 - 流量曲线 PRESSURE DROP VS.FLOW



订货代号 TO ORDER

LEPS2 - 20 - P - F - * * - * *

┌───┐
┌──┐
┌──┐
┌──┐
┌──┐
┌──┐

1
2
3
4
5
6

<p>1 功能 LEPS2= 外控逻辑阀 Cartridge-style Non-adjustable Logic Element With External Pilot</p>	<p>3 类型 P= 滑阀, 常闭, 外部导压源 Spool, Normally Closed, External Pilot Source</p>	<p>6 阀块油口 Body Porting 空白 Blank= 不带阀块 None 16T=SAE 16 8G=G 1</p>
<p>2 规格 Size 20=20 规格</p>	<p>4 控制方式 Control F= 固定不可调 Fixed Stroke</p>	<p>其它螺纹油口也是可选择的 Other Porting is Available</p>
	<p>5 差动压力 Differential Pressure 160=160psi(11bar) 80=80psi(5.5bar) 40=40psi(2.8bar)</p>	

安装尺寸 **INSTALLATION DIMENSIONS**

Unit=Millimeters

H

