

LCBEG/LCBEH

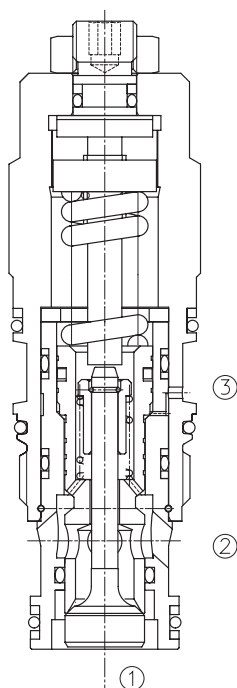
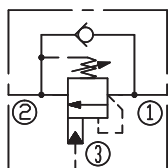
平衡阀

标准型 /standard

说明 DESCRIPTION

A cartridge-style standard capacity counterbalance valve
平衡阀

SYMBOL



工作 OPERATION

Counterbalance valves with pilot assist are meant for control on overrunning load. The check valve allows free flow from port ② to port ① while a direct-acting, pilot-assisted relief valve controls flow from port ① to port ②. Pilot assist at port ③ lowers the effective setting of the relief valve at a rate determined by the pilot ratio.

带先导开启平衡阀用于控制超越负载工况。油液从②口到①口单向自由流动；油液经直动，先导辅助从①口溢流到②口，③口是溢流辅助控制口，按控制比降低溢流功能的有效设定值。

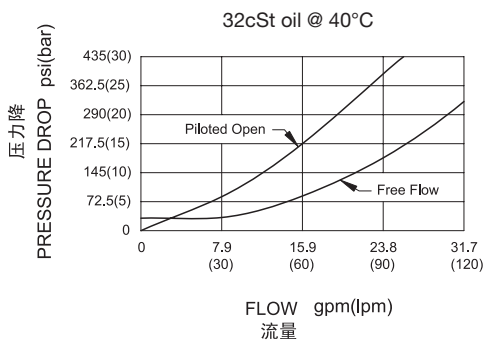
特性 FEATURES

- Counterbalance valves should be set at least 1.3 times the maximum load induced pressure.
最大设定压力至少为最大负载压力的 1.3 倍。
- Backpressure at port ② adds to the effective relief setting at a ratio of 1 plus the pilot ratio times the backpressure.
②口的背压按“控制比 +1”的倍数加到溢流阀的设定值上即增加值 = (1+ 控制比) × 压力值。
- Reseat exceeds 85% of set pressure when the valve is standard set. Setting lower than the standard set pressure may result in lower reseal percentages.
标准设定时，闭合压力值大于设定压力值的 85%；低于标准设定，则闭合压力值的百分比相应降低。
- Factory pressure setting established at 30cc/min(2 in³/min).
工厂的设定是指当溢流阀开启（流量为 30cc/min）时的压力。

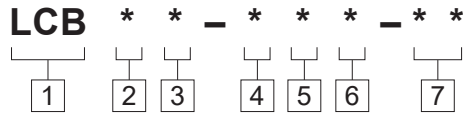
技术参数 SPECIFICATIONS

最大设定值(Max. Setting):	350 bar(LCBEG,LCBEH)
最大负载(Max. Recommended Load Pressure at Max. Setting):	270Bar (LCBEG,LCBEH)
流量(Flow):	See PRESSURE DROP VS.FLOW graph.
内泄漏(Internal Leakage):	5 drops/min(滴/分).
控制比(Pilot Ratio):	(LCBEG) 4.5: 1; (LCBEH) 10:1
温度(Temperature):	-40°F to +250°F(-40°C to +120°C)
过滤(Filtration):	See page (参见) N-1
油液(Fluids):	Mineral-based fluids with viscosities of 7.4 to 420 cSt.(矿物油粘度)
插孔(Cavity):	SUN T-2A, See page M-6
阀块材料(Body Material):	6061-T6 aluminum alloy rated to 207bar, Steel & Ductile iron rated to 350bar 6061-T6铝,允许使用最大压力207bar 钢和球铁允许使用最大压力350bar

压力 - 流量曲线 PRESSURE DROP VS.FLOW



订货代号 TO ORDER



- 1 功能**
 LCB= 平衡阀
 Counterbalance Cartridge Valve
- 2 流量 Flow**
 E=120L/min
- 3 控制比 Pilot Ratio**
 G=4.5:1
 H=10:1
- 4 控制方式 Control**
 L=Standard Screw Adjustment

- 5 弹簧调压范围 Spring Ranges**
 J=2000-5000psi(140-350bar)
 Preset:3000psi(210bar)(Check:1.7bar)
 K=1000-2500psi(70-175bar)
 Preset:2000psi(140bar)(Check:1.7bar)
 C=2000-5000psi(140-350bar)
 Preset:3000psi(210bar)(Check:0.3bar)
 D=1000-2500psi(70-175bar)
 Preset:2000psi(140bar)(Check:0.3bar)
- 6 油封 Seal Kits**
 N= 丁晴橡胶 Buna N
 V= 氟橡胶 Viton

- 7 阀块油口 Body Porting**
 空白 Blank= 不带阀块 None
 8T=SAE8
 10T=SAE10
 3G=G 3/8
 4G=G 1/2
- ※ 阀块详见章节 K-23—K-24
其它螺纹油口也是可选择的
Other Porting is Available



安装尺寸 INSTALLATION DIMENSIONS

Unit=Millimeters

