

# LEC-10-42

## 压力补偿阀（静态负载感应）

### 说明 DESCRIPTION

A cartridge-style, priority on demand, pressure compensator with a static load sense.

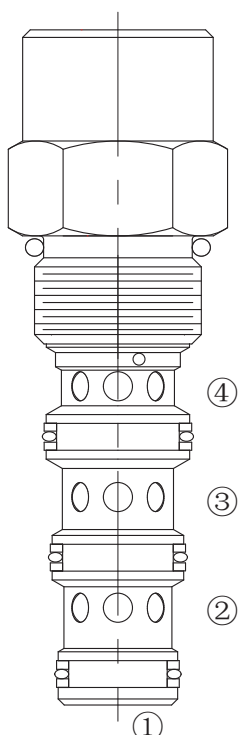
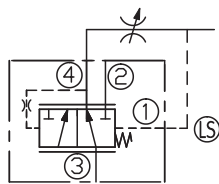
优先型，具有静态负载感应的压力补偿功能的螺纹插装阀

### 工作 OPERATION

With inlet flow at port ③, the valve will deliver required priority flow at port ④ regardless of load pressure. Excessive flow exits at port ② and port ① is the load sense port. All ports may be fully pressurized

油口③进油后，优先将必需的流量输送到油口④，不受负载压力的影响。剩余的流入②口，①口是负载传感油口。所有油口可以完全受压。

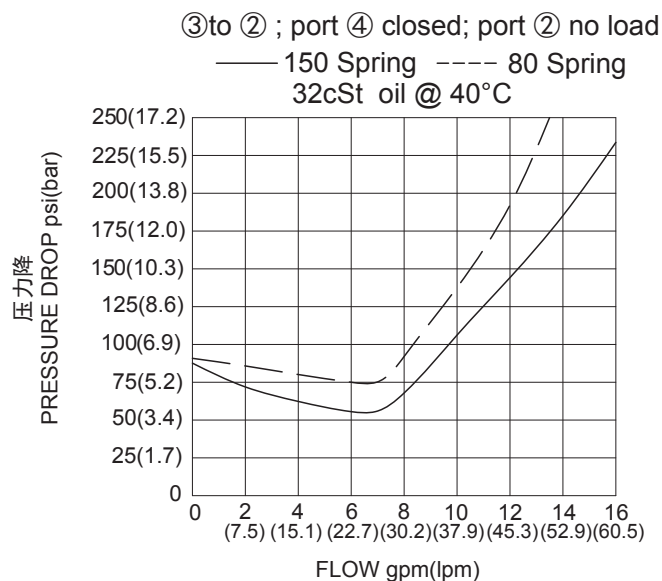
### SYMBOL



### 技术参数 SPECIFICATIONS

最大工作压力 (Max. Operating Pressure):	240bar
额定输入流量 (Input Flow Rate) :	45.4lpm.
最大调节流量 (Maximum Regulated Flow):	37.9lpm with 10.3bar compensator spring 30.2lpm with 5.5bar compensator spring
温度 (Temperature):	-40°F to +250°F(-40°C to +120°C)
过滤 (Filtration):	See Page (参见) N-1
油液 (Fluids):	Mineral-based fluids with viscosities of 7.4 to 420 cSt. (矿物油粘度)
插孔 (Cavity):	10-4, See page M-2
阀块材料 (Body Material):	6061-T6 aluminum alloy rated to 207bar, St eel & Ductile iron rated to 350bar 6061-T6铝，允许使用最大压力207bar 钢和球铁允许使用最大压力350bar

### 压力 - 流量曲线 PRESSURE DROP VS.FLOW



订货代号 TO ORDER

**LEC - 10 - 42 - \*\* - \*\***

<p><b>1</b> 功能 LEC= 压力补偿阀 Pressure Compensator, Priority On Demand</p>	<p><b>3</b> 补偿压力 Compensator Spring 80=80psi(5.5bar) 150=150psi(10.3bar)</p>	<p><b>4</b> 阀块油口 Body Porting 空白 Blank= 不带阀块 None 6T=SAE6 8T=SAE8 2G=G 1/4 3G=G 3/8</p>
<p><b>2</b> 规格 Size 10=10 规格</p>		

※ 阀块详见章节 K-6  
其它螺纹油口也是可选择的  
Other Porting is Available

F

安装尺寸 INSTALLATION DIMENSIONS

Unit=Millimeters

